



PSP group



100 Embankment Manchester

PSP Architectural was approached by Prater to produce the channel panels which feature around level one of the new BREEAM Excellent Grade A office building - 100 Embankment, the second and final phase of the Embankment scheme in Salford's Greengate neighbourhood.

ARCHITECT

Flanagan Lawrence

CONTRACTOR/DEVELOPER

BAM

PSP CLIENT

Prater

PSP SYSTEM

Bespoke A2 Fire Rated Channel Panels

www.pspuk.com

100 Embankment Manchester

PSP Architectural manufactured 192 panels for this project and the majority were produced on a flatbed CNC machine which offers high tolerances and very sharp folds, whilst the curved elements were bespoke fabrications.

PROJECT DETAIL

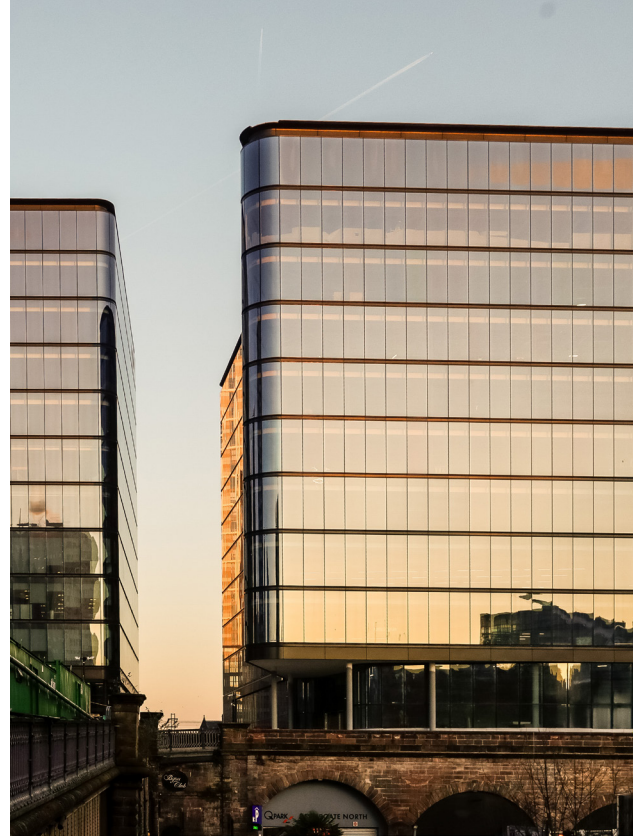
Salford's Greengate neighbourhood has benefitted from extensive regeneration in recent years and includes a brand new business district at the heart of the scheme.

100 Embankment is the second building of a two-phased development on this vibrant site and this nine storey BREEAM Excellent Grade A building, provides 166,000ft² of office space and sits alongside sister building, 101 Embankment.

After the successful delivery of 101 Embankment in 2016, Prater was appointed by BAM to provide an external package for the neighbouring 100 Embankment and required a supply chain that could successfully deliver a high quality, fast paced programme. Prater appointed PSP Architectural to produce the feature channel panels on level one and engaged with the team from an early design stage to ensure successful collaboration.

PSP Architectural manufactured 192 panels for this project and the majority were produced on a flatbed CNC machine which offers high tolerances and very sharp folds, whilst the curved elements were bespoke fabrications. These A2 fire rated ACM feature channel panels included a backing support grid which was specified to ensure it allowed for thermal and floor movement but also for ease of installation onsite.

Both buildings sit on top of a retained Grade II listed facade, which once operated as Exchange Station. The sandstone viaduct forms a grand base for the office building, which sits at plinth level, nine metres above a



significant new area of public realm. In contrast to the viaduct, the A2 fire rated powder coated panels work well with the steel and glass in creating a modern and contemporary office building, sitting above the robust sandstone facade of the railway embankment.

“PSP were extremely approachable and helpful in finding solutions to overcome technical glitches. Although being competitive is very important, perhaps more so was achieving the brief on this project. The architects intent asked for panels up to 6m long which would achieve a flatness that would avoid the appearance of ‘oil-canning’. In addition, the panels had to be sufficiently robust so as not to distort when being manhandled into position. PSP achieved all of this while remaining competitive and meeting the tight timescales. After this experience we are confident that our relationship will last for a very long time.”

WILLIAM MORRISON, PRATER

PSP Architectural

Unit 11 | All Saints Industrial Estate
Sildon | County Durham | DL4 2RD
T: 01388 770490

www.pspuk.com

